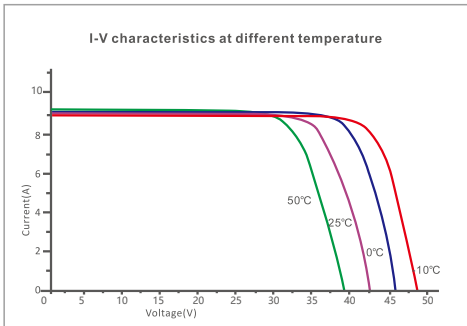
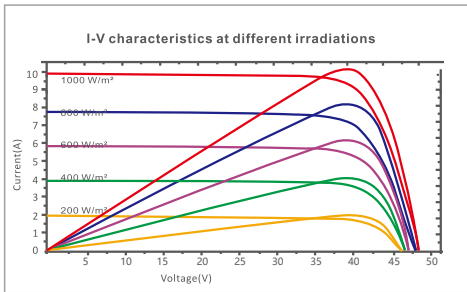
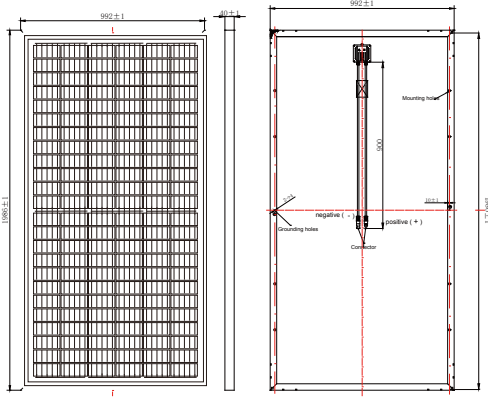


RS6I-P

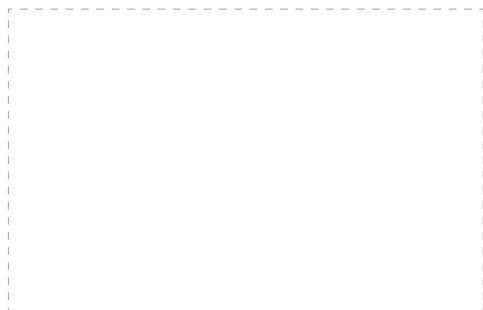


GLOBAL PROFESSIONAL PV PRODUCTS INTERGRATED SOLUTIONS SUPPLIER

Dimension of PV Modules Unit: mm



Partner information



A: No 15 Puzhuang Avenue, Wuzhong District,
Suzhou, Jiangsu China, 21500
F: +86512-66292101 T: +86 512-66293858
W: www.resunsolar.com E: info@resunsolar.com

ELECTRICAL DATA(STC)

Rated Power in Watts-Pmax(Wp)	335W	340W	345W	350W	355W	360W	365W	370W	375W	380W
Open Circuit Voltage-Voc(V)	47.30V	47.50V	47.60V	47.70V	47.80V	47.90V	48.00V	48.10V	48.20V	48.30V
Short Circuit Current-Isc(A)	9.13A	9.22A	9.32A	9.42A	9.52A	9.62A	9.75A	9.86A	9.96A	10.06A
Maximum Power Voltage-Vmp(V)	37.99V	38.20V	38.30V	38.40V	38.50V	38.60V	38.70V	38.80V	38.90V	39.00V
Maximum Power Current-Imp(A)	8.82A	8.90A	9.00A	9.11A	9.22A	9.32A	9.43A	9.54A	9.64A	9.74A
Module Efficiency (%)	17.00%	17.26%	17.51%	17.77%	18.02%	18.27%	18.53%	18.78%	19.03%	19.29%

STC: Irradiance 1000 W/m², Cell Temperature 25°C, Air Mass AM1.5 according to EN 60904-3.

ELECTRICAL DATA(NOCT)

Maximum Power-Pmax (Wp)	250W	255W	258W	261W	265W	269W	273W	277W	281W	284W
Open Circuit Voltage-Voc (V)	44.00V	44.20V	44.30V	44.40V	44.50V	44.60V	44.70V	44.80V	44.90V	45.00V
Short Circuit Current-Isc (A)	7.45A	7.53A	7.62A	7.71A	7.80A	7.89A	7.98A	8.07A	8.16A	8.25A
Maximum Power Voltage-Vmp(V)	35.40V	35.60V	35.70V	35.80V	35.90V	36.00V	36.10V	36.20V	36.30V	36.40V
Maximum Power Current-Imp(A)	7.07A	7.15A	7.22A	7.30A	7.39A	7.47A	7.56A	7.64A	7.73A	7.81A

NOCT: Irradiance at 800 W/m², Ambient Temperature 20°C, Wind Speed 1 m/s.

MECHANICAL DATA

Solar cells	Cut-poly-crystalline 156.75 x 78.37mm, 5 Bus bars
Cell configuration	144Cells
Module dimensions	1986 x 992 x 40mm
Weight	23KGS
Front Cover	3.2mm Tempered Glass
Frame Material	Anodized Aluminum Alloy
J-BOX	IP68, 3 Diodes
Cable	4mm ² (IEC)/12AWG(UL), 1000mm
Connectors	MC4 or MC4 Comparable
Standard Packaging	26pcs/pallet

TEMPERATURE & MAXIMUM RATINGS

Nominal Operating Cell Temperature (NOCT)	45°C±2°C
Temperature Coefficient of Voc	-0.32%/°C
Temperature Coefficient of Isc	0.05%/°C
Temperature Coefficient of Pmax	-0.39%/°C
Operational Temperature	-40~+85°C
Maximum System Voltage	1500V(IEC)/600V(UL)
Max Series Fuse Rating	20A

PACKAGING CONFIGURATION

	40HQ	20GP
Number of modules per container	696pcs	312pcs
Package	26pcs/pallet, 2pcs/carton box	26pcs/pallet
Package Number	24pallets + 36carton boxes	10pallets
Package Weight	600kg/pallet, 46kg/carton box	600kg/pallet
Package Dimension	1995*1120*1130mm/pallet 1992*1020*90mm/carton box	1995*1120*1130mm/pallet



RESUN SOLAR ENERGY CO.,LTD.



WWW.RESUNSOLAR.COM



RS6I-P

Half-cell high-efficiency solar panel is cutting cells One divides into two, it could reduce thermal resistance, improve output power 5-10W; it could meet 1500V whole system voltage design demand and reduce whole system cost 10%. In comparison to full solar cell modules, this one cells subfissure, power attenuation and sunshine occlusion is more lower; and excellent high temperature character. It is the best choice for large ground power station, Ecological agriculture fishery project and Distributed beach project.

144 Cells

poly-crystalline

335-380W

Power output

19.29%

The Highest Efficiency

0~ +5W

Tolerance



**HIGHER ENERGY GENERATION
AND LOWER POWER LOSS**



ANTI HOT SPOT & PID FREE



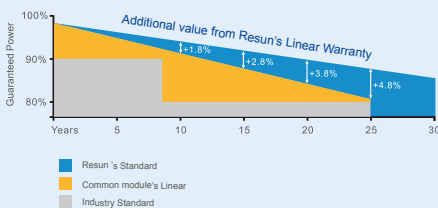
LESS SHADING EFFECT



**APPLICABLE FOR 1500V SYSTEM, LOWER
SYSTEM COST**

**Entire module certified to withstand high
wind loads (2400 Pascal) and snow loads
(5400 Pascal)***

**0.5% Annual Degradation
over 30 years**



LINEAR PERFORMANCE WARRANTY

12 year Product Warranty / 30 year Linear Power Warranty

Full range of products and certification systems

ISO 9001 TUV PID-FREE CE IEC61215/61730/61701/62716

